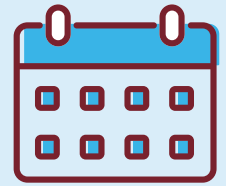


P3 MOBILE CLINIC SCHEDULE.



April 2022

Daily operating hours: **8am - 5pm** | Closed for lunch: **12pm - 1pm**

Sunday	Monday	Tuesday	Wednesday	Thursday	Friday	Saturday
	28	29	30	31	1	2
	EL RIO COMMUNITY HEALTH CENTER – SOUTHEAST CLINIC 6950 East Golf Links Road, Tucson AZ 85730					
3	4	5	6	7	8	9
	MHC HEALTHCARE – MAIN OFFICE 13395 N Marana Main Street, Marana, AZ 85653					
10	11	12	13	14	15	16
	MHC HEALTHCARE – MAIN OFFICE 13395 N Marana Main Street, Marana, AZ 85653					
17	18	19	20	21	22	23
	EL RIO COMMUNITY HEALTH CENTER – SOUTHEAST CLINIC 6950 East Golf Links Road, Tucson AZ 85730					
24	25	26	27	28	29	30
	EL RIO COMMUNITY HEALTH CENTER – SOUTHEAST CLINIC 6950 East Golf Links Road, Tucson AZ 85730					

Look for P3's **MOBILE CLINIC!**



Remember to bring:

- ♥ PHOTO ID
- ♥ HEALTH INSURANCE CARD
- ♥ ALL MEDICATIONS YOU ARE CURRENTLY TAKING

(520) 468-0808 | P3Arizona.org

P3 Health Partners
Arizona

People. Passion. Purpose.