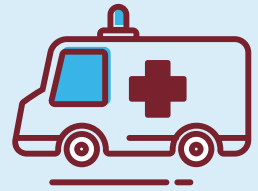


# Do you have an **URGENT HEALTHCARE NEED?**



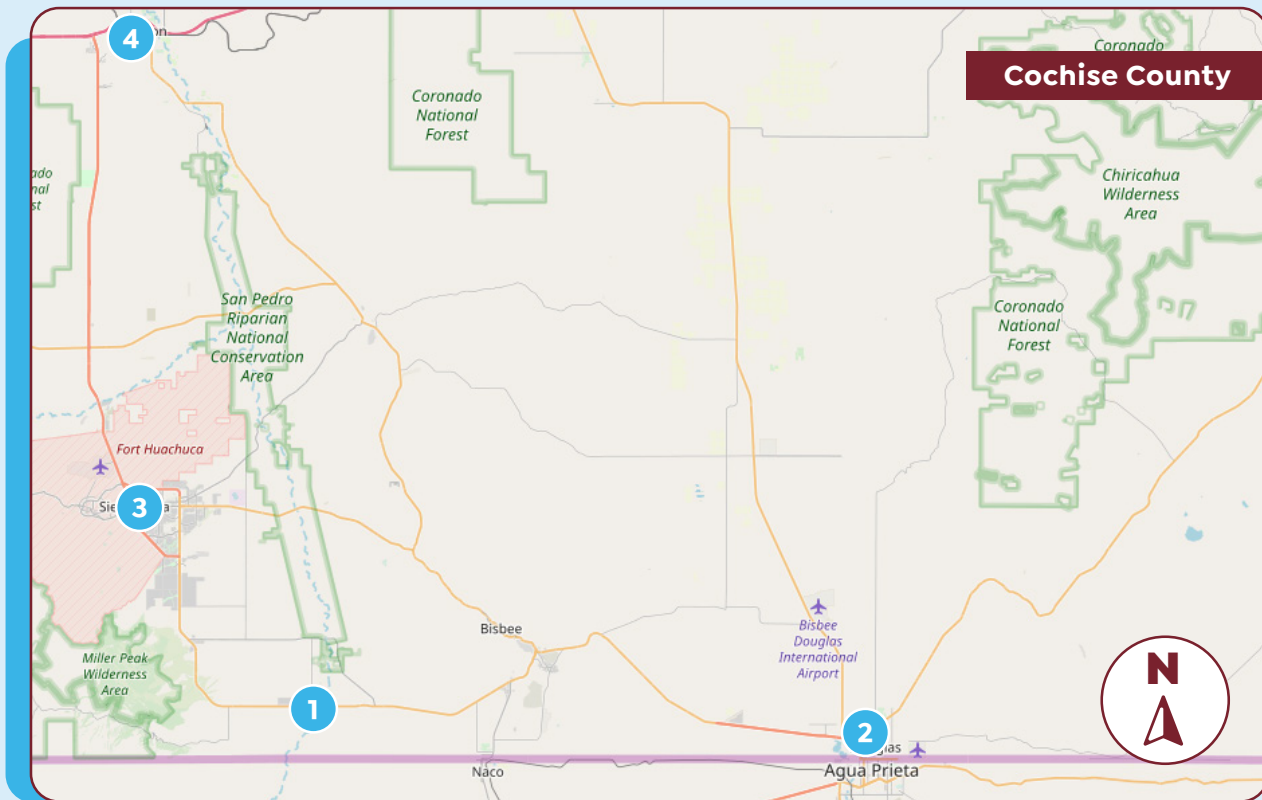
Getting the right care, at the right time, at the right place can **SAVE YOU TIME AND MONEY!**

If you are experiencing one of these conditions, call your primary care provider/doctor first. If you are not able to visit your primary care provider/doctor or if it is after hours, visit an urgent care near you.

- ♥ FLU AND COLD SYMPTOMS
- ♥ FEVER
- ♥ BUMPS, CUTS AND SCRAPES
- ♥ BACK PAIN
- ♥ NAUSEA, VOMITING, DIARRHEA OR CONSTIPATION

- ♥ HEADACHES
- ♥ URINARY SYMPTOMS
- ♥ MUSCLE OR JOINT STRAINS OR SPRAINS
- ♥ RASHES AND MINOR BURNS
- ♥ EAR PAIN OR SINUS PRESSURE
- ♥ OTHER NON-LIFE THREATING CONDITIONS

## Urgent care **LOCATIONS MAP.** See reverse side for listings.



For more information, visit **P3Arizona.org**

**P3** Health Partners  
**Arizona**

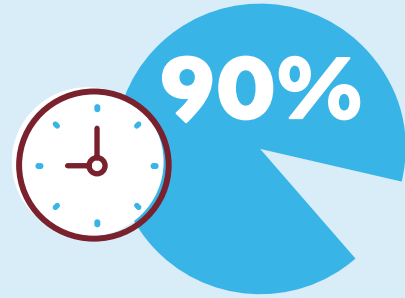
People. Passion. Purpose.

# COCHISE COUNTY

## Wellcare Member Locations

- 1** Copper Queen – Palominas  
**(520) 366-0300**  
10524 E. Highway 92  
Palominas, AZ 85615
- 2** COPPER QUEEN – DOUGLAS  
**(520) 805-6800**  
100 E. Firth St.  
Douglas, AZ 85607
- 3** HIGH DESERT CLINIC URGENT  
AND OCCUPATIONAL CARE  
**(520) 459-8915**  
77 East Fry Blvd.  
Sierra Vista, AZ 85635
- 4** BENSON HOSPITAL CARE CLINIC  
**(520) 720-6563**  
599 W. 4th St.  
Benson, AZ 85602

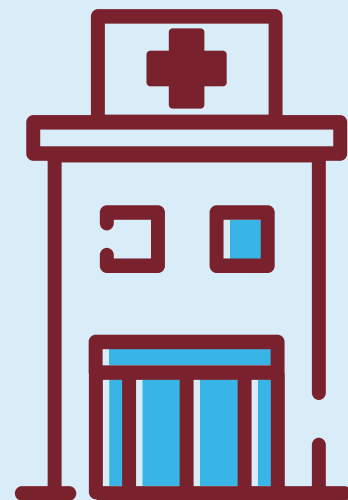
If you are experiencing chest pain, shortness of breath or other life threatening emergencies, **CALL 911 IMMEDIATELY.**



of urgent care patients wait **30 MINUTES OR LESS** to see a provider.

Cost for ER visits can be **3-5 TIMES** more than an urgent care visits.

Always check with your **HEALTH PLAN** for an up to date list of urgent care locations.



For more information, visit **P3Arizona.org**

# Do you have an **URGENT HEALTHCARE NEED?**



Getting the right care, at the right time, at the right place can **SAVE YOU TIME AND MONEY!**

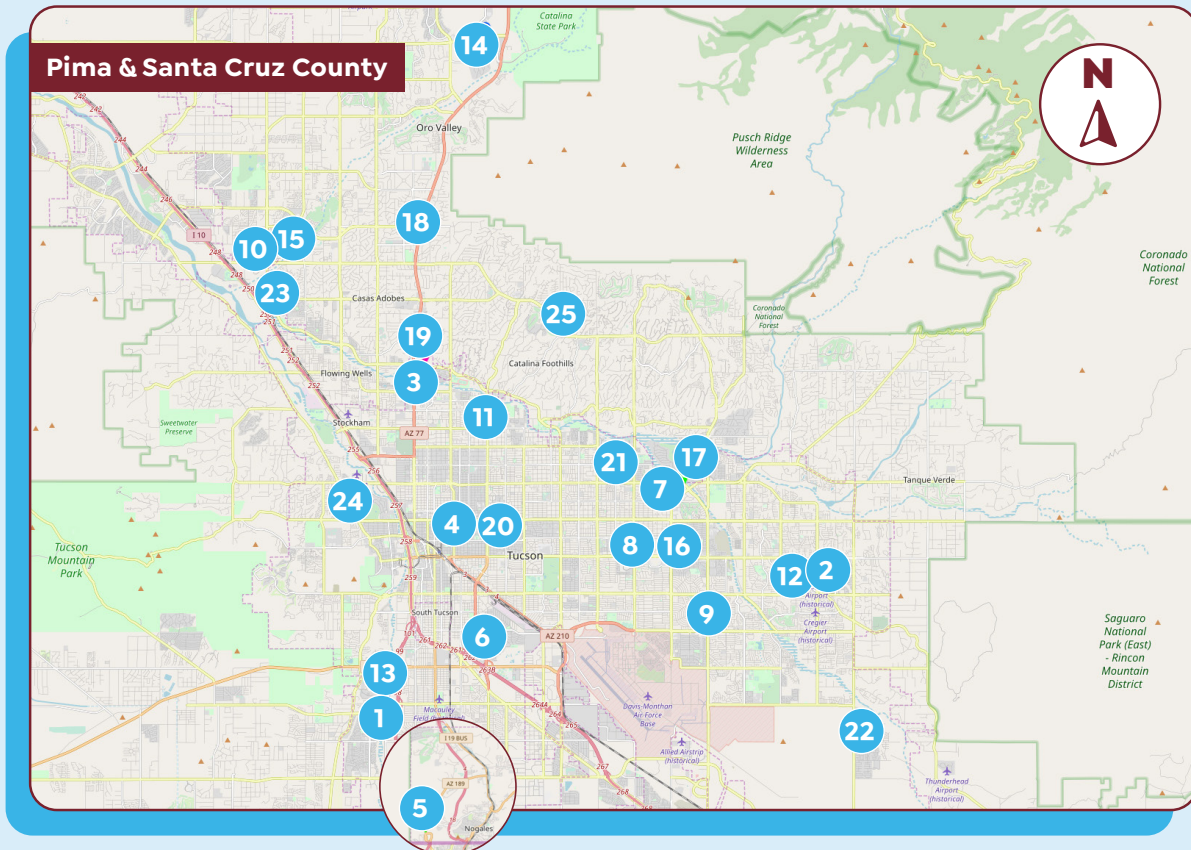
If you are experiencing one of these conditions, call your primary care provider/doctor first. If you are not able to visit your primary care provider/doctor or if it is after hours, visit an urgent care near you.

- ♥ FLU AND COLD SYMPTOMS
- ♥ FEVER
- ♥ BUMPS, CUTS AND SCRAPES
- ♥ BACK PAIN
- ♥ NAUSEA, VOMITING, DIARRHEA OR CONSTIPATION

- ♥ HEADACHES
- ♥ URINARY SYMPTOMS
- ♥ MUSCLE OR JOINT STRAINS OR SPRAINS
- ♥ RASHES AND MINOR BURNS
- ♥ EAR PAIN OR SINUS PRESSURE
- ♥ OTHER NON-LIFE THREATING CONDITIONS

## Urgent care **LOCATIONS MAP.**

See reverse side for listings.



For more information, visit **P3Arizona.org**

**P3** Health Partners  
**Arizona**

People. Passion. Purpose.

## NEXTCARE URGENT CARE

- 1 5369 S. Calle Santa Cruz Ste. 145  
Tucson, AZ 85706-3963  
Mon - Sun | 8AM - Midnight
- 2 9525 E. Old Spanish Trail Ste. 101  
Tucson, AZ 85748-6630  
Mon - Sun | 8AM - Midnight
- 3 4280 North Oracle Road Ste. 100  
Tucson AZ 85705-2101  
Mon - Sun | 8AM - Midnight
- 4 501 N. Park Ave. Ste. 110  
Tucson, AZ 85719-5034  
Mon - Fri | 10AM - 10PM  
Sat - Sun | 10AM - 6PM
- 5 298 W. Mariposa Rd., Ste. 2  
Nogales, AZ 85621-1089  
Mon - Fri | 8AM - 8PM  
Sat - Sun | 8AM - 4PM
- 6 1570 E. Tucson Marketplace Blvd. Ste. 140  
Tucson AZ, 85713  
Mon - Fri | 8AM - 8PM  
Sat - Sun | 8AM - 4PM
- 7 **Nextcare Arizona LLC**  
6238 E. Pima St.  
Tucson AZ 85712

## BANNER URGENT CARE

- 8 5545 E. Broadway Blvd. Ste. 101  
Tucson, AZ 85711  
Mon - Fri | 8AM - 9PM
- 9 7066 E. Golf Links Rd.  
Tucson, AZ 85730  
Mon - Fri | 8AM - 9PM
- 10 7089 N. Thornydale Rd. Ste. 101  
Tucson, AZ 85741  
Mon - Fri | 8AM - 9PM
- 11 3611 N. Campbell  
Tucson, AZ 85719  
Mon - Fri | 8AM - 9PM

## CARBON HEALTH

- 12 1040 S. Harrison Rd. Ste. 120  
Tucson, AZ 85748  
Mon - Fri | 7AM - 7PM
- 13 1218 W. Irvington Rd. Ste. 150  
Tucson, AZ 85714  
Mon - Fri | 7AM - 7PM
- 14 1880 E. Tangerine Rd. Ste. 100  
Oro Valley, AZ 85755  
Mon - Fri | 7AM - 7PM
- 15 3662 W. Ina Rd. Ste. 150  
Tucson, AZ 85741  
Mon - Fri | 7AM - 7PM
- 16 6303 E. Broadway Blvd. Ste. 161  
Tucson, AZ 85710  
Mon - Fri | 7AM - 7PM
- 17 6572 E. Grant Rd. Ste. 130  
Tucson, AZ 85715  
Mon - Fri | 7AM - 7PM
- 18 7725 N. Oracle Rd. Ste 131  
Tucson, AZ 85704  
Mon - Fri | 7AM - 7PM
- 19 90 W. River Rd.  
Tucson, AZ 85704  
Mon - Fri | 7AM - 7PM
- 20 446 N. Campbell Ave. Ste. 130  
Tucson, AZ 85719  
Mon - Fri | 7AM - 7PM

## TMC URGENT CARE

- 21 2424 N. Wyatt Drive, #140  
Tucson, AZ 85712  
7 days a week | 8AM - 8PM
- 22 10350 E Drexel Rd. Ste. 170  
Tucson, AZ 85747  
7 days a week | 8AM - 8PM

## NORTHWEST URGENT CARE

- 23 **NMC NW Urgent Care at Orange Grove**  
3870 W. River Road Ste. 126  
Tucson, AZ 85741  
7 days a week | 8AM - 7PM
- 24 **NMC Speedway Urgent Care**  
1370 N. Silverbell Rd. Ste. 170  
Tucson, AZ 85745  
7 days a week | 8AM - 7PM
- 25 **NMC La Paloma Urgent Care**  
4001 E. Sunrise Dr. Ste. 121  
Tucson, AZ 85748  
7 days a week | 8AM - 7PM



of urgent care patients wait **30 MINUTES OR LESS** to see a provider.

Cost for ER visits can be **3-5 TIMES** more than an urgent care visits.

Always check with your **HEALTH PLAN** for an up to date list of urgent care locations.



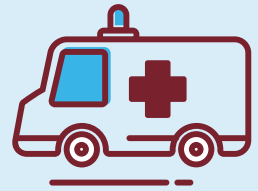
If you are experiencing chest pain, shortness of breath or other life threatening emergencies, **CALL 911 IMMEDIATELY.**

**P3** Health Partners  
**Arizona**

People. Passion. Purpose.



# Do you have an **URGENT HEALTHCARE NEED?**



Getting the right care, at the right time, at the right place can **SAVE YOU TIME AND MONEY!**

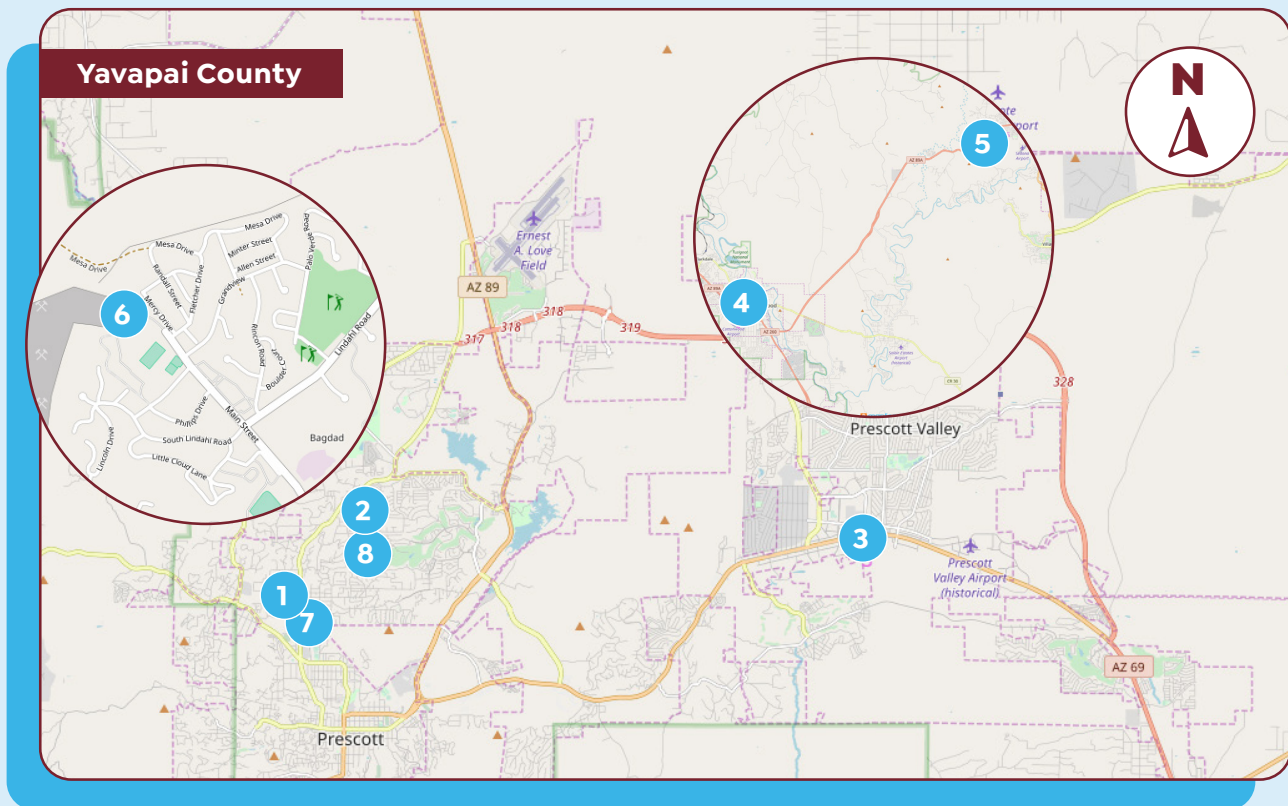
If you are experiencing one of these conditions, call your primary care provider/doctor first. If you are not able to visit your primary care provider/doctor or if it is after hours, visit an urgent care near you.

- ♥ FLU AND COLD SYMPTOMS
- ♥ FEVER
- ♥ BUMPS, CUTS AND SCRAPES
- ♥ BACK PAIN
- ♥ NAUSEA, VOMITING, DIARRHEA OR CONSTIPATION

- ♥ HEADACHES
- ♥ URINARY SYMPTOMS
- ♥ MUSCLE OR JOINT STRAINS OR SPRAINS
- ♥ RASHES AND MINOR BURNS
- ♥ EAR PAIN OR SINUS PRESSURE
- ♥ OTHER NON-LIFE THREATING CONDITIONS

## Urgent care **LOCATIONS MAP**

See reverse side for listings.



For more information, visit **P3Arizona.org**

**P3** Health Partners  
**Arizona**

People. Passion. Purpose.

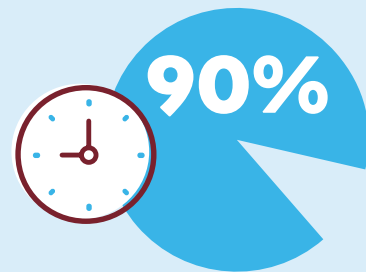
# YAVAPAI COUNTY

## Aetna & Humana Member Locations

- 1** NEXTCARE URGENT CARE  
**(928) 443-5103**  
2062 Willow Creek Rd.  
Prescott, AZ 86301
- 2** THUMB BUTTE URGENT CARE  
**(928) 775-9007**  
3120 Willow Creek Rd.  
Prescott, AZ 86301
- 3** NEXTCARE URGENT CARE  
**(928) 772-3336**  
3051 N Windsong Dr.  
Prescott Valley, AZ 86314
- 4** NEXTCARE ARIZONA  
**(928) 634-2574**  
450 S Willard St., Ste. 120  
Cottonwood, AZ 86326
- 5** NEXTCARE URGENT CARE  
**(928) 203-4813**  
2530 W St. Rt. 89A, Ste. A  
Sedona, AZ 86336

## United Healthcare Member Locations

- 6** GILA HEALTH RESOURCES  
URGENT CARE CENTER  
12 Hope Dr.  
Bagdad, AZ 86321
- 7** NEXTCARE URGENT CARE  
2062 Willow Creek Rd  
Prescott, AZ 86301
- 8** THUMB BUTTE URGENT CARE  
3120 Willow Creek Rd.  
Prescott, AZ 86301



**of urgent care patients  
wait 30 MINUTES OR LESS  
to see a provider.**

**If you are experiencing chest  
pain, shortness of breath or  
other life threatening emergencies,  
CALL 911 IMMEDIATELY.**

Cost for ER visits can be  
**3-5 TIMES** more than an  
urgent care visits.

Always check with your  
**HEALTH PLAN** for an up  
to date list of urgent  
care locations.



**For more information, visit [P3Arizona.org](https://P3Arizona.org)**

**P3** Health Partners  
**Arizona**

People. Passion. Purpose.

# Do you have an **URGENT HEALTHCARE NEED?**



Getting the right care, at the right time, at the right place can **SAVE YOU TIME AND MONEY!**

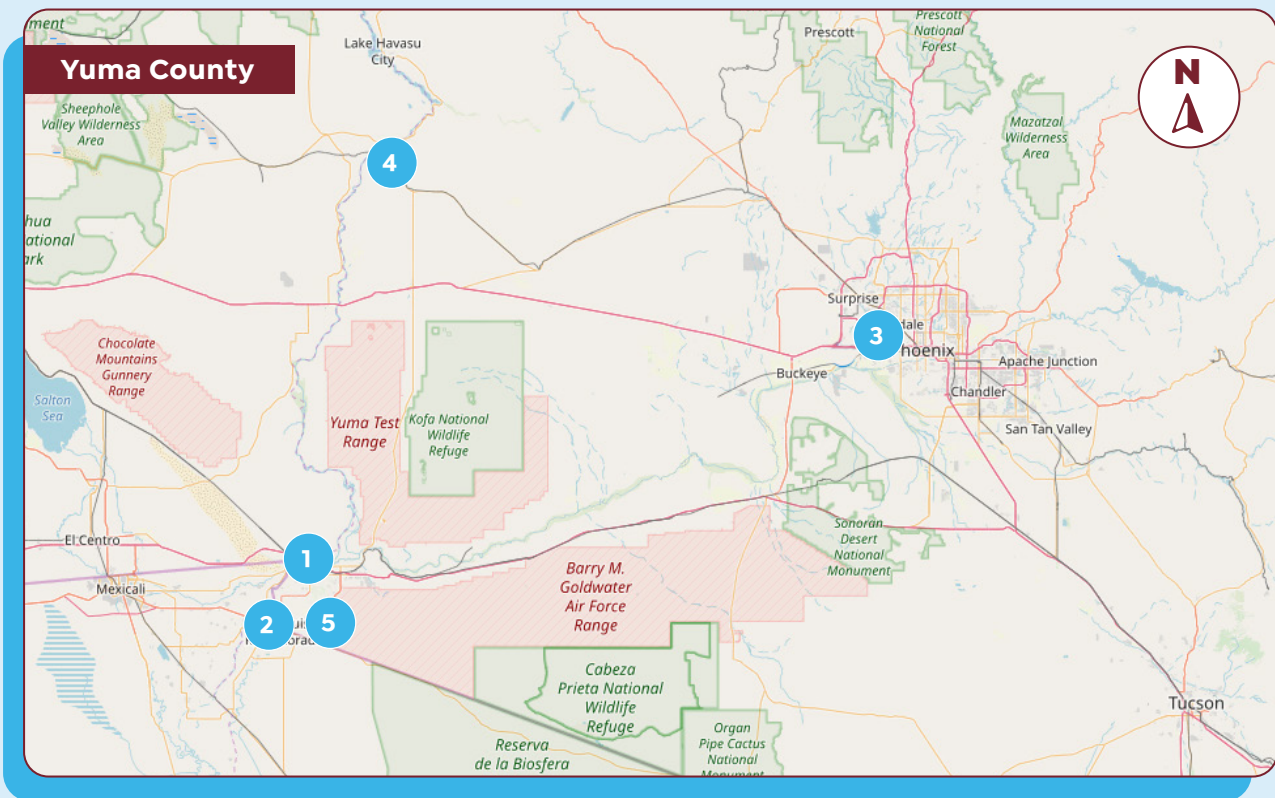
If you are experiencing one of these conditions, call your primary care provider/doctor first. If you are not able to visit your primary care provider/doctor or if it is after hours, visit an urgent care near you.

- ♥ FLU AND COLD SYMPTOMS
- ♥ FEVER
- ♥ BUMPS, CUTS AND SCRAPES
- ♥ BACK PAIN
- ♥ NAUSEA, VOMITING, DIARRHEA OR CONSTIPATION

- ♥ HEADACHES
- ♥ URINARY SYMPTOMS
- ♥ MUSCLE OR JOINT STRAINS OR SPRAINS
- ♥ RASHES AND MINOR BURNS
- ♥ EAR PAIN OR SINUS PRESSURE
- ♥ OTHER NON-LIFE THREATING CONDITIONS

## Urgent care **LOCATIONS MAP.**

See reverse side for listings.



For more information, visit **P3Arizona.org**

**P3** Health Partners  
**Arizona**

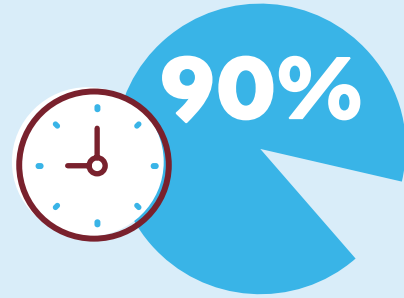
People. Passion. Purpose.

# YUMA COUNTY

## Wellcare Member Locations

- 1** NEXTCARE ARIZONA LLC  
**(888) 705-8558**  
1394 W. 16th St.  
Yuma, AZ 85364
- 2** SAN LUIS URGENT CARE  
**(928) 550-5514**  
1233 N. Main St., Ste. 1A  
San Luis, AZ 85349
- 3** BANNER URGENT CARE SERVICES LLC  
**(623) 419-6405**  
16430 W. Yuma Rd.  
Goodyear, AZ 85338
- 4** LA PAZ REGIONAL HOSPITAL  
**(928) 669-9201**  
1200 W. Mohave Rd.  
Parker, AZ 85344
- 5** SAN LUIS URGENT CARE  
**(928) 366-5166**  
151 S. Oak Avenue Ste. 7  
San Luis, AZ 85336

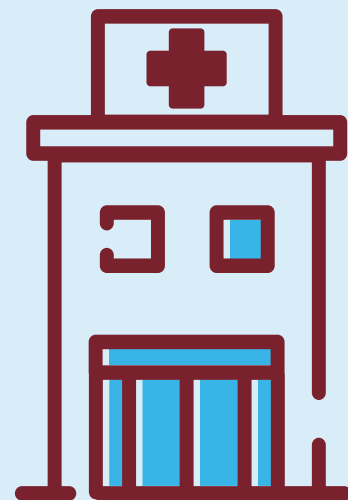
If you are experiencing chest pain, shortness of breath or other life threatening emergencies, **CALL 911 IMMEDIATELY.**



of urgent care patients wait **30 MINUTES OR LESS** to see a provider.

Cost for ER visits can be **3-5 TIMES** more than an urgent care visits.

Always check with your **HEALTH PLAN** for an up to date list of urgent care locations.



For more information, visit **P3Arizona.org**

**P3** Health Partners  
**Arizona**

People. Passion. Purpose.