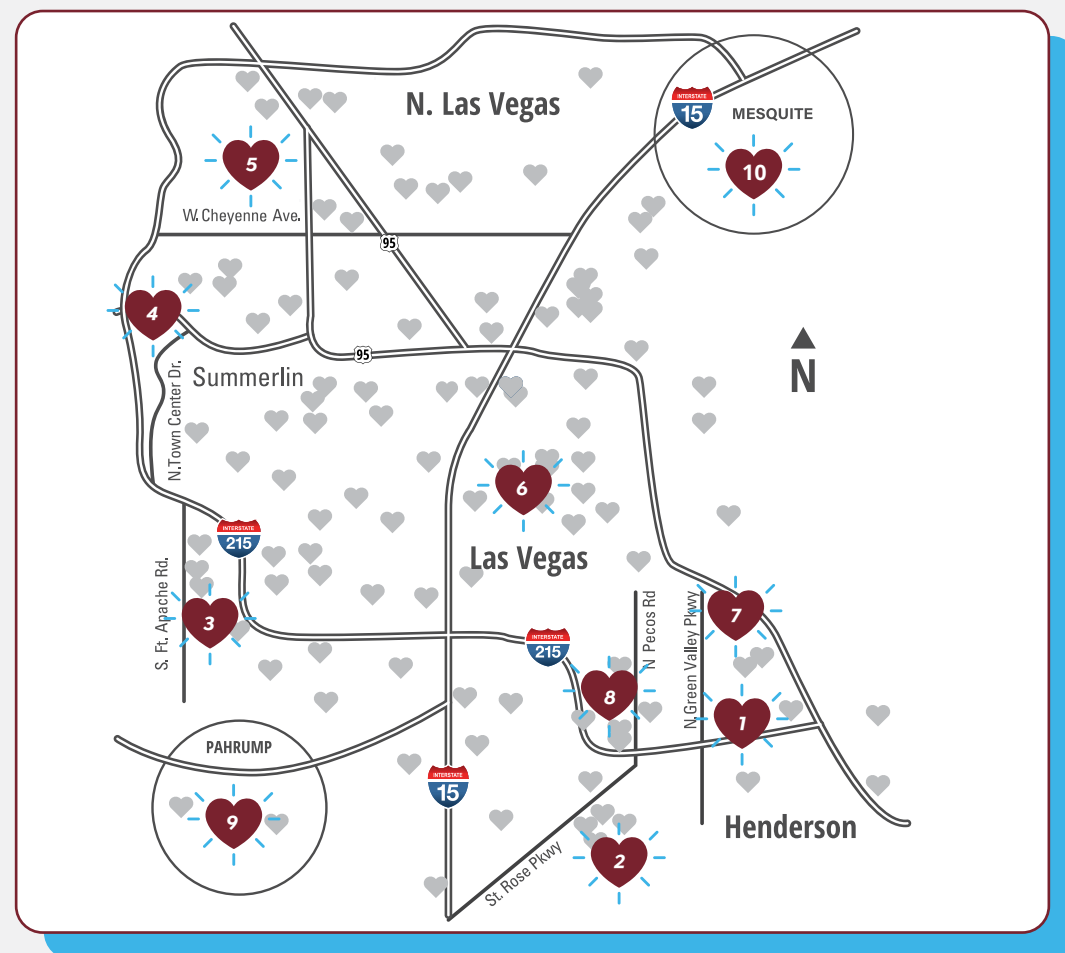


P3 Health Partners
Nevada
People. Passion. Purpose.

P3NV | BROKER TOOL KIT | 2022-2023





Meet our PROVIDERS.



- | | | |
|--|---|--|
| <p>1 Green Valley
(702) 844-4841
100 N. Green Valley Pkwy. Ste. 239
Henderson, NV 89074</p> | <p>2 Seven Hills
(702) 844-4840
880 Seven Hills Dr. Ste. 140
Henderson, NV 89052</p> | <p>3 West Sunset
(702) 844-4846
9280 W. Sunset Rd. Ste. 200
Las Vegas, NV 89148</p> |
| <p>4 Town Center
(702) 844-4842
653 N. Town Center Dr. Ste. 106
Las Vegas, NV 89144</p> | <p>5 Business Park
(702) 844-4848
2831 Business Park Ct. Ste. 130A
Las Vegas, NV 89128</p> | <p>6 Desert Springs
(702) 888-3221
4275 Burnham Ave. Ste. 320
Las Vegas, NV 89119</p> |
| <p>7 Whitney Ranch
(702) 888-3126
1500 W. Sunset Rd. Ste. 100-120
Henderson, NV 89014</p> | <p>8 Pecos
(702) 888-3148
9065 S. Pecos Rd. Ste. 190
Henderson, NV 89074</p> | <p>9 Pahrump, Lola
(775) 505-0810
360 S. Lola Ln. Bldg. B
Pahrump, NV 89048</p> |
| <p>10 Mesquite
(702) 979-5966
340 Falcon Ridge Pkwy. Bldg. 200, Ste. 201
Mesquite, NV 89027</p> | <p>Pahrump, Calvada
1470 E Calvada Blvd,
Pahrump, NV 89048</p> | |

To learn more about our providers,
visit **P3MG.ORG**

P3 Health Partners
Medical Group
People. Passion. Purpose.



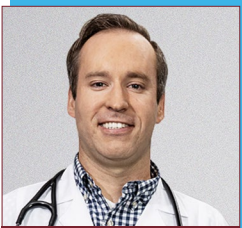
CLINICIAN LEADERSHIP

P3 Health Partners Nevada

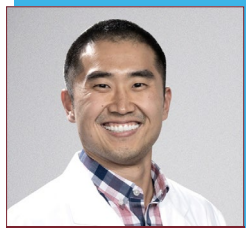
JEFFREY WAGNER, MD

VP of Clinical Affairs

BUSINESS PARK



Trent Leavitt, DO



Winner Lee, DO

BUSINESS PARK

COMMERCIAL



Maria Villalobos, NP

LANGUAGE(S):
English, Spanish



DESERT SPRINGS



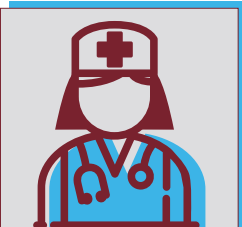
Schadrey Bonds, NP-C

GREEN VALLEY



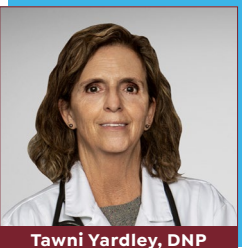
Tricia Agustin, MD

LANGUAGE(S):
English, Tagalog



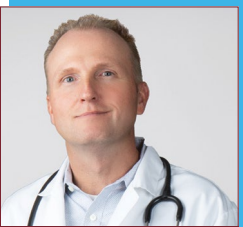
Rabbiya Abidid, MD

MESQUITE



Tawni Yardley, DNP

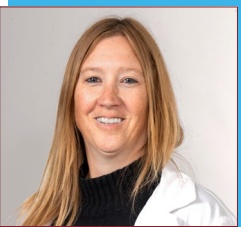
PAHRUMP, LOLA



Edward Harding, MD



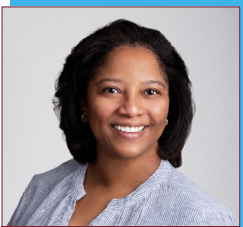
Angelica Musumeci, NP



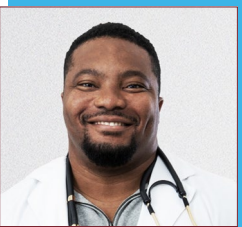
Paula Wabsis, FNP-BC

PAHRUMP, CALVADA

COMMERCIAL

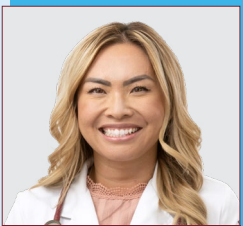


Noni Hayman, NP

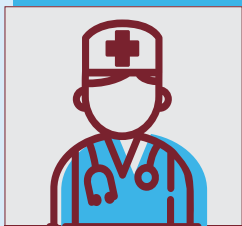


Ifeanyi Madu, NP

COMMERCIAL



Joyce Damiano, NP



Martha Kim, NP



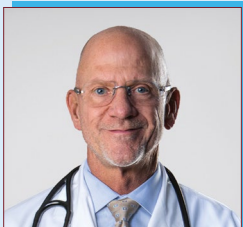
PECOS

SEVEN HILLS



Carmelita Payos, MD

LANGUAGE(S):
English, Tagalog, Bisaya



Robert Ritchey, MD



Susan Shields, PA-C

TOWN CENTER



Carolyn Dechaine, PA-C



Teresa Hong, MD

LANGUAGE(S):
English, Tagalog



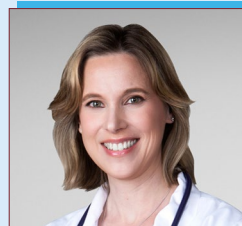
Foluke Adekunle Uche, MD

WEST SUNSET



Roopa Dani, MD

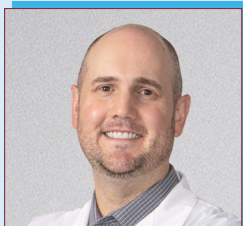
LANGUAGE(S):
English, Hindi,
Gujarati, Tami



Mary Nara, DNP

LANGUAGE(S):
English, French

WHITNEY RANCH

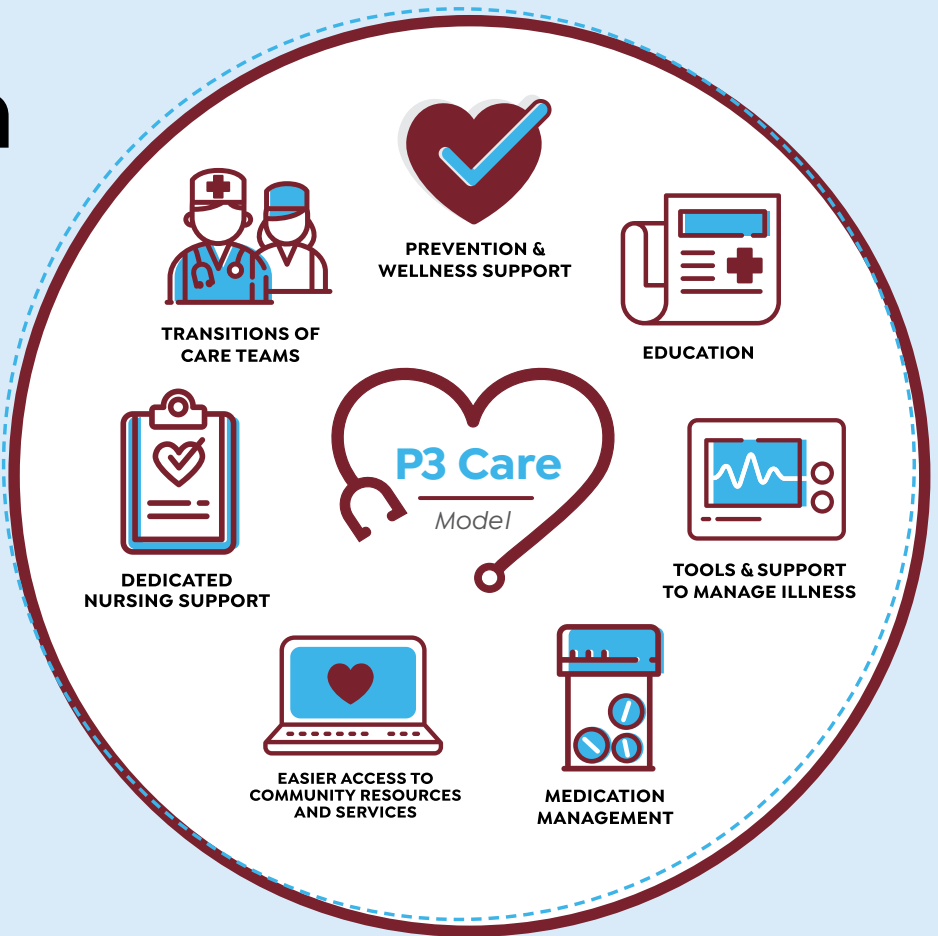


Kevin Ogden, DO

Here when **YOU** need us most.

We know many of your healthcare needs happen outside your provider's office. It's our job to help you when you need it most.

Our team of nurses and medical assistants work closely with your primary care provider to ensure you have the resources you need to stay healthy and safe.



Need support? Call us when you need help:

- ♥ Obtaining medication fills, refills and 90-day supplies.
- ♥ Understanding your chronic condition.
- ♥ Coordinating office visits.
- ♥ Ordering medical supplies.
- ♥ Finding resources to meet your social needs, such as meals or transportation.
- ♥ Transitioning out of the hospital or skilled nursing facility.

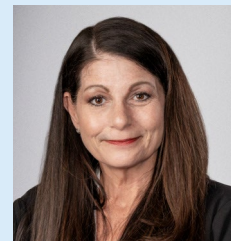
Our team may contact you to check in if you:

- ♥ Haven't seen your primary care provider in the last year.
- ♥ Have recently been discharged from the hospital.
- ♥ Have been diagnosed with multiple chronic conditions.
- ♥ Have visited the ER.
- ♥ Have recently transitioned your care.

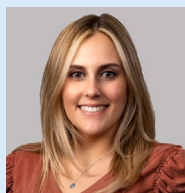
Register for our **CARE MANAGEMENT** program, by calling our team at **(702) 570-5582**.

P3 Health Partners
Nevada
People. Passion. Purpose.

Our team is here to **HELP** when **YOU** need us.



Sherry, RN, MSN,
MBA
Director of Care Management



Alexa, RN
Care Manager



Brien, RN
Care Manager



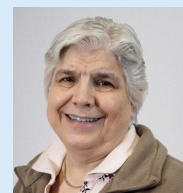
Cheryl, RN
Care Manager



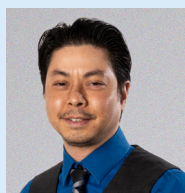
Elizabeth, RN
Care Manager



Geraldine, RN
Care Manager



Jean, RN
Care Manager



Jeremiah, RN
Care Manager



Kristine, RN
Care Manager



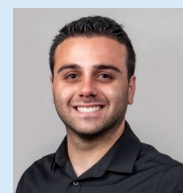
Recah, RN
Care Manager



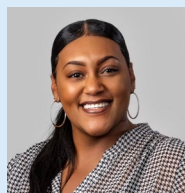
Varry, RN
Care Manager



Vanessa
Lead Care Navigator



Frank
Care Navigator



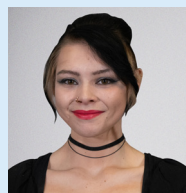
Jajuana
Care Navigator



Janet
Care Navigator



Jody
Care Navigator



Kimberly
Care Navigator



Noelle
Care Navigator



LaCreatia
Care Navigator



Tamoye
Care Navigator



Mark, LMSW
Social Worker



Sara, LCSW
Social Worker

Call us today at **(702) 570-5582.**


















Who's taking care of YOU?

NP-C vs PA-C vs MD/DO - What's the difference?



NP-C: Nurse Practitioner Certified | **PA-C:** Physician Assistant Certified | **MD:** Doctor of Medicine | **DO:** Doctor of Osteopathy

	PREREQUISITE EDUCATION	LEARNING MODEL	DEGREE OR CERTIFICATE AWARDED
	NP-C BACHELOR'S DEGREE in nursing and clinical hours PA-C BACHELOR'S DEGREE and clinical hours (no specific major required) MD/DO BACHELOR'S DEGREE (no specific major required) <i>fulfill medical school prerequisite</i>	MEDICAL - NURSING MEDICAL - PHYSICIAN MEDICAL - PHYSICIAN	MASTER'S DEGREE planned transition to Doctorate MASTER'S DEGREE PA-C DOCTOR OF MEDICINE (M.D.) OR OSTEOPATHY (D.O)
	Time in... CLASSROOM CLINIC RESIDENCY	NP-C 500 HRS 900+ HRS Optional 1-2 YRS	PA-C 1,000 HRS 2,000 HRS Optional 1-2 YEARS 3-8 YEARS
	RECERTIFICATION	1,000 professional practice hours + 20 CE credits/year or exam every 5 years	100 education hours every 2 years and exam every 10 years 50 education hours/ year and exam every 2 or 10 years
	LICENSED BY	STATE NURSING BOARD	STATE MEDICAL BOARD
	Write Prescriptions Prescribe Controlled Substances Conduct Physical Exams Diagnose and Treat Illnesses Order and Interpret Tests Counsel Patients	     	     



DO, MD, NP, and PA: Four Great Routes to Quality Healthcare

P3 Medical Group is proud to employ a variety of healthcare providers from diverse medical education backgrounds. We understand that many patients are most familiar with medical doctors, also known as MDs, but we encourage our patients to learn more about how the medical profession has evolved.

Each professional path requires extensive classroom and practice hours and all are certified by the state medical or nursing boards. Most importantly, all four types of medical professionals are qualified to handle all your primary care needs.

Here are some answers to frequently asked questions about provider types:

Why doesn't everyone take the same path?

In some cases, career goals evolve. Students studying nursing decide to take the next step and become certified nurse practitioners. In other cases, students obtain a degree in a non-pre-med field, like kinesiology, and decide that becoming a certified physician assistant will help them reach their goals to care for patients. Other students relish the depth of knowledge gained in medical school with hands-on experience in both the classroom and clinical settings.

What's the difference between an MD and a DO?

While both provider types are referred to as doctors, there are some differences. DOs are osteopathic physicians whose education and training focuses on the body as an integrated whole. MDs are allopathic physicians, where the traditional Western medicine approach centers more on diagnosing illness and injury and treating through medical or surgical remedies. Both types of doctors complete similar medical education and clinical experience requirements and are licensed by the state medical board. While MDs are found in a variety of practice types, most DOs opt to practice in primary care because it allows them to use their comprehensive approaches to deliver excellent patient care.

What's the difference between a licensed practical nurse (LPN), registered nurse (RN) and certified nurse practitioner (NP-C)?

All three types of nurses contribute to great patient care. Licensed practical nurses (LPNs) usually have about a year of nursing education and some earn certifications or associate degree. They are required to work under a doctor or certified nurse practitioner's close supervision and often work in long-term care facilities. Registered nurses (RNs) have an associate degree or bachelor's degree and frequently opt to work in hospitals. Certified nurse practitioners (NP-Cs) are required to have a master's degree and care for patients in medical group clinics or private practices, performing the same duties as their MD, DO, and PA-C colleagues.

Don't physician assistants (PA-Cs) just assist doctors?

While PA-Cs are required to be assigned to a medical doctor, they can perform nearly every function in a primary care practice that the physician can, including conducting examinations, ordering and reviewing labs and tests and prescribing medications. The doctor the PA-C is assigned to has to review 5 percent of their charts, but PA-Cs operate independently nearly all of the time.

Why does P3 Medical Group use PA-Cs and NP-Cs to care for patients?

We chose a diverse group of qualified practitioners because of their commitment to quality patient care. Regardless of their education path, each of our providers is certified, licensed and experienced. We respect our patients' preferences for the provider they feel most comfortable with and encourage them to experience the outstanding care from our entire provider team.

Medicare Advantage plans help you get the care you **DESERVE.**

- ♥ Can you afford your medications?
- ♥ Have you been diagnosed with a chronic health condition like diabetes or heart disease?
- ♥ Do you need transportation assistance to get to your appointments?
- ♥ Do you have adequate dental and vision benefits?
- ♥ Are you tired of paying more out-of-pocket expenses each year?

If you answered **“YES”** to any of these questions, you may want to consider a Medicare Advantage plan.

To learn more visit **P3MG.org**
or call **(702) 333-4700**

We **PROMISE** we will...

- ♥ Get you an appointment within days, not months
- ♥ Take our time to get to know you
- ♥ Have a full and accurate understanding of your wellness
- ♥ Make sure you're getting the screenings, tests and vaccinations you need
- ♥ Focus on preventative care and early treatment
- ♥ Help you schedule follow-up appointments with specialists
- ♥ Explain how to take your medications properly and help you manage chronic conditions



To learn more visit **P3MG.org**
or call **(702) 333-4700**

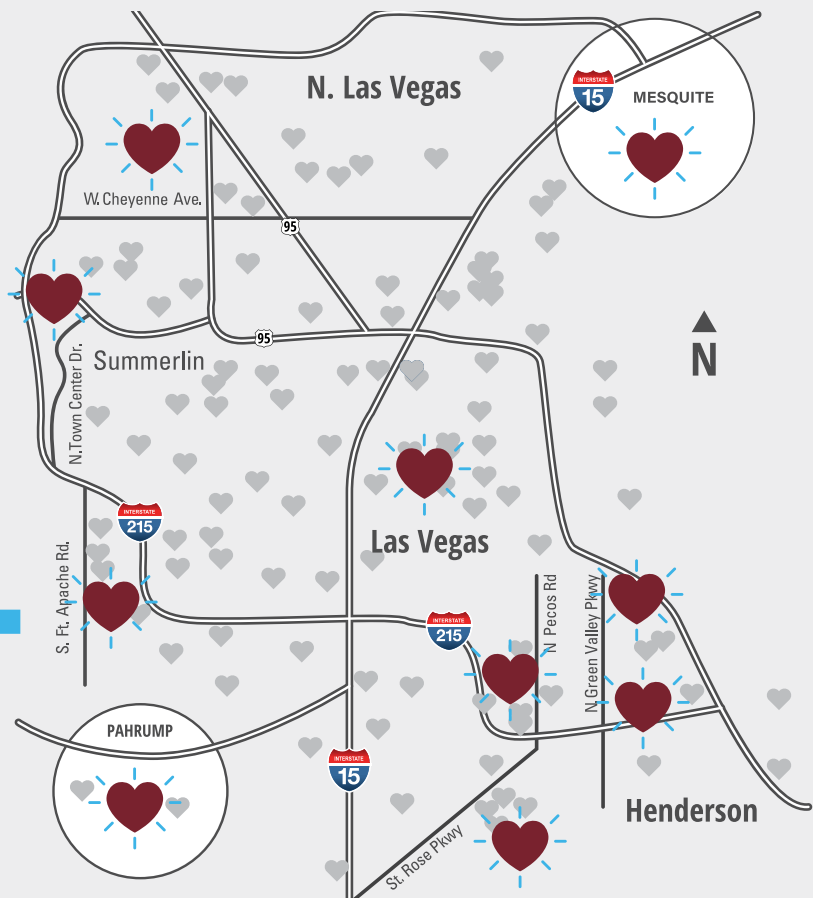
Get the care you **DESERVE.**



Delivered by a **STRONG NETWORK**
of providers and partners.

300+
Primary care
providers

1000+
Specialists



OUR HEALTH PLAN PARTNERS INCLUDE:

aetna® Medicare Solutions

 Alignment Healthcare

Anthem® 

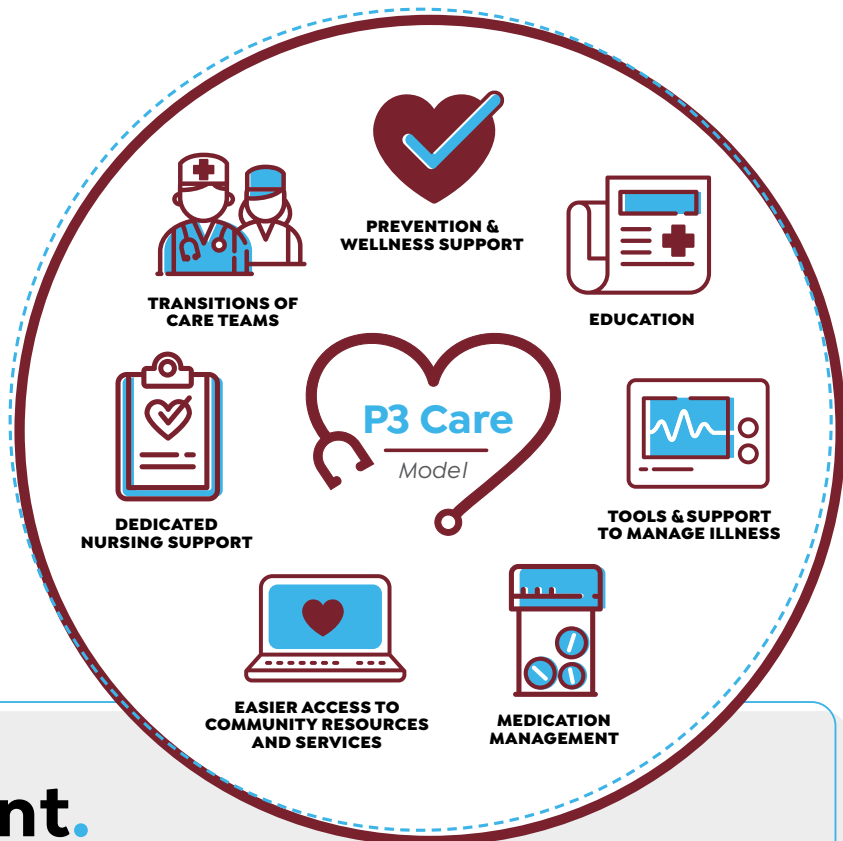
Humana®

Senior Care
Plus 
A Medicare Advantage Plan from Hometown Health.

wellcare™

Here when you **NEED US** **MOST.**

By selecting one of our health plan partners and a primary care provider in the P3 network, you have access to P3's patient teams and care services.



Care management.

We know many of your healthcare needs happen outside your provider's office. Our team of nurses and medical assistants work closely with primary care providers to:



- ♥ Identify patients who may have acute needs or chronic illness.
- ♥ Outreach to patients to ensure they have the resources needed to stay healthy and safe.
- ♥ Provide extra support when needed.

P3 care experience navigators.

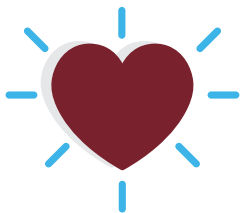
- ♥ Schedule appointments
- ♥ Find a provider
- ♥ Support you when issues arise
- ♥ Connect you with care managers to help

Ongoing outreach and patient education resources:

- ♥ Patient Portal
- ♥ Invites to P3 patient events
- ♥ Flu clinics
- ♥ Chronic disease management

If you need support, please call our
CARE EXPERIENCE TEAM AT (702) 333-4700.

Welcome to **P3.**

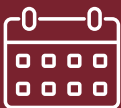


You can expect us to:



Help you understand your condition(s) and explain your options and help you make decisions about your care.

Get to know you and your health history so we can suggest options that make sense for you.



Provide appointments at times that are convenient for you.

Coordinate care to a trusted specialist, when needed so you can get better faster.



P3 Medical
Group

*Built by **Doctors.** Loved by **Patients.***

P3MG.org | (702) 333-4700

SWITCHING your
care to a P3 provider is
EASY.



1.

Call us to schedule your first appointment and new patient orientation.

Ask your current provider to send your medical records to P3.

✔ *Get a signed release from P3*

2.

3.

Register as a patient through our Patient Portal.

✔ patientportal.p3mg.org

Prepare for your first appointment:

4.

- ♥ Complete new patient forms
- ♥ Think about your health goals
- ♥ Jot down any questions for your provider
- ♥ Make a list of your current medications and specialists

Call us at (702) 333-4700, if you have any questions or need support.

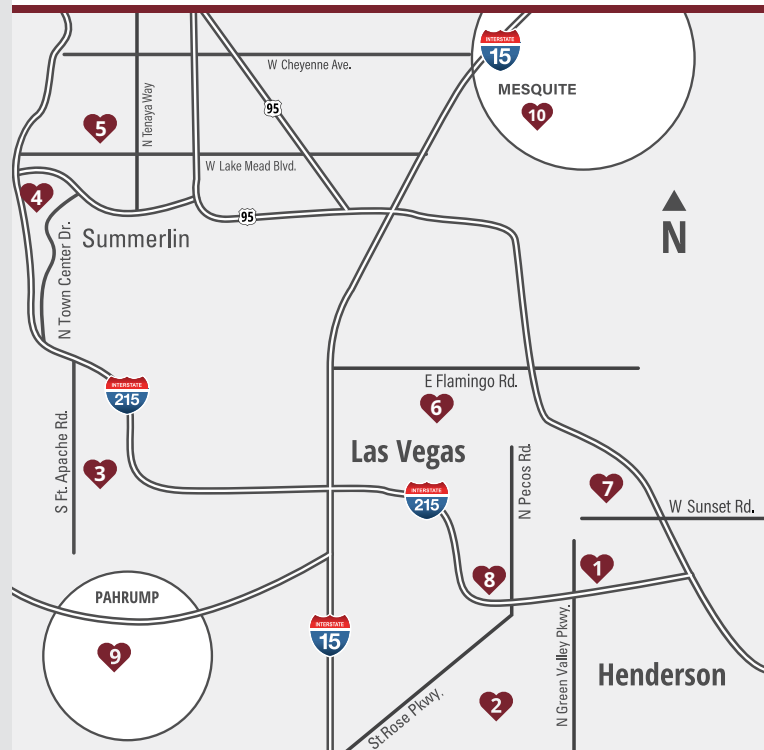
EASY. CONVENIENT. SECURE.

With your busy life, it can be hard to stay on top of your family's health care. Our online patient portal allows you to communicate with us easily and safely.

Using your own secure password, you can log in to the online patient portal at any time from the comfort and privacy of your home.

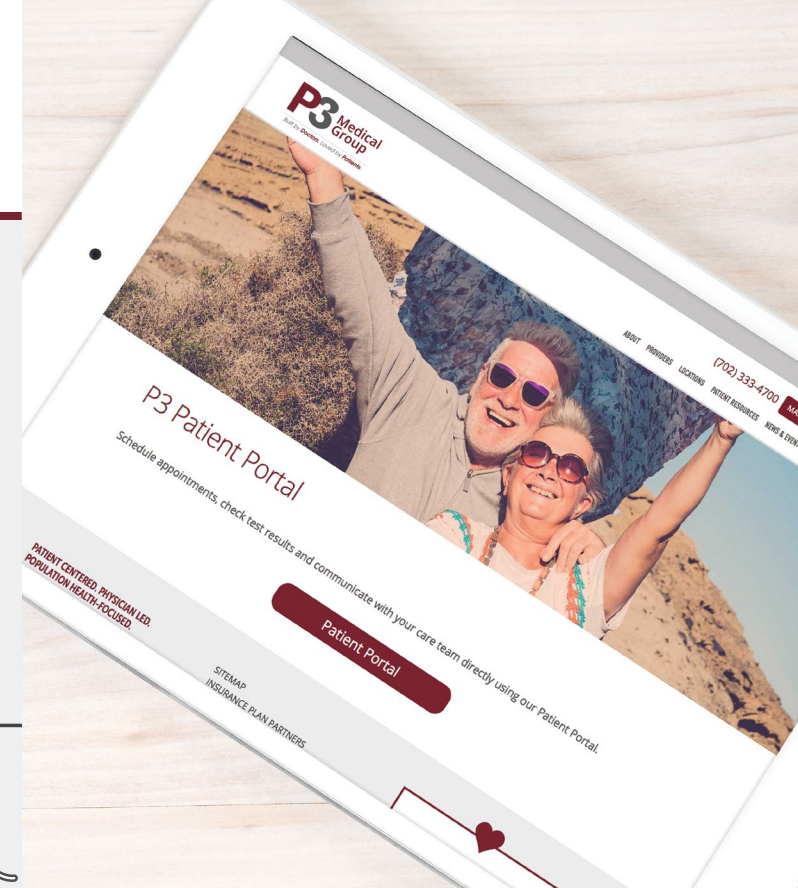
P3patientportal.org

Clinic LOCATIONS



- | | | |
|----|-----------------------|----------------|
| 1 | Green Valley | (702) 844-4841 |
| 2 | Seven Hills | (702) 844-4840 |
| 3 | West Sunset | (702) 844-4846 |
| 4 | Town Center | (702) 844-4842 |
| 5 | Business Park | (702) 844-4848 |
| 6 | Desert Springs | (702) 888-3221 |
| 7 | Whitney Ranch | (702) 888-3126 |
| 8 | Pecos | (702) 888-3148 |
| 9 | Pahrump | (775) 505-0810 |
| 10 | Mesquite | (702) 979-5966 |

P3 Health Partners
Medical Group
People. Passion. Purpose.



Online PATIENT PORTAL

Manage your health information online, and get simple and safe access to your medical information any time using a computer, tablet or smartphone.

Visit our **P3 Patient Portal** at
P3patientportal.org

P3 Health Partners
Medical Group
People. Passion. Purpose.

Get better connected to your health.

- ♥ View and request future appointments
- ♥ Request prescription refills
- ♥ Retrieve test/lab results
- ♥ View personal health information
- ♥ Communicate with your doctor via secure messages
- ♥ Print your vaccine history
- ♥ Print current medication list
- ♥ Print a summary of your last visit at the office
- ♥ Review and pay billing statements

Sign in to the **P3 PATIENT PORTAL**

Go to **P3patientportal.org**

Welcome to the P3 Health Partners Patient Portal

Make a One-Time Payment

QuickPay Code, Statement ID, or Access Code

[Where can I find my code?](#)

By clicking **Make a Payment**, you represent that you are authorized to address the patient's billing matters.

Make a Payment

Sign In to Your Account

Email address

Password

[Forgot your password?](#) **Sign In**

Don't have a Patient Portal account? [Sign up today](#) stay connected to your health care.

IF YOU ALREADY HAVE AN ACCOUNT:

Type in the email address that you provided to the office and your password. Then click **“Sign In”** to view your patient information.

IF YOU DO NOT HAVE AN ACCOUNT:

Select the **“Sign up today”** link to create an account by entering a few details.

Reminder: The information you enter must match the information that is listed at your provider's office.

You will then be prompted to answer the security questions and create your own unique password.

**If you need portal assistance,
please call (702) 333-4700
Monday - Friday | 8 AM - 5 PM**



Health Plan SNAPSHOT.

P3 is contracted with the following Nevada's top health plans. We are proud to offer Medicare Advantage patients many choices and options to meet their healthcare needs.

aetna[®]

 **ALIGNMENT**
HEALTH PLAN

Anthem 

Humana[®]

Senior Care
Plus 

A Medicare Advantage Plan from Hometown Health.

wellcare[™]



SCAN HERE
for P3 directories

P3 Health Partners
Nevada
People. Passion. Purpose.



Health Plans



PCP



Specialist



Hospitals in Contract

Aetna

- Aetna Medicare Premier Plan (HMO-POS) H4711-001
- Aetna Medicare Prime Plan (HMO-POS) H4711-011
- Aetna Medicare Select Plan (PPO) H5521-022
- Aetna Medicare Select Plan (HMO) H3931-094
- Aetna Medicare Choice Plan (PPO) H5521-055
- Aetna Medicare Elite Plan (PPO) H5521-299
- Aetna Medicare Eagle Plan (PPO) H5521-353
- Aetna Medicare Prime Plus (HMO) H3931-151
- Aetna Medicare Dual Prime Plan (HMO D-SNP) H4711-002



Aetna

Dignity
HCA, UMC, VHS

- Boulder City Hospital
- Mesa View Hospital
- UHS-Desert View



Health Plans



PCP



Specialist



Hospitals in Contract

Humana

- Humana Choice (PPO) H5216-141
- Humana Choice (PPO) H5216-281
- Humana Choice (PPO) H5216-037
- Humana Choice (PPO D-SNP) H5216-302
- Humana Honor (PPO) H5216-216
- Humana Gold Plus (HMO) H6622-082
- Humana Gold Plus Diabetes and Heart (C-SNP) H662-029
- Humana Gold Plus Lung (HMO C-SNP) H662-030
- Humana Gold Plus (HMO) H662-056
- Humana Value Plus (HMO) H662-064
- Humana Gold Plus (SNP-DE) H662-079



Humana

UMC, VHS

- Centennials Hills Hospital
- Desert Springs Hospital
- Dignity Health-San Martin Campus
- Dignity Health-Siena Campus
- Henderson Hospital
- Mountain View Hospital
- Southern Hills Hospital
- Spring Valley Hospital
- Spring Valley Medical Center
- Summerlin Hospital

Alignment Health

- Alignment Health Plan Platinum (HMO) H9686-001
- Alignment Health Plan Heart & Diabetes (HMO C-SNP) H9686-004
- Alignment Health Plan The ONE (D-SNP) H9686-005



HCA, UMC, VHS

- Boulder City Hospital
- Mesa View Hospital
- North Vista Hospital

Senior Care Plus

- Senior Care Plus Complete Plan (HMO) H2960-019



HCA, UMC

- Boulder City Hospital
- Mesa View Hospital
- North Vista Hospital

Anthem

- Anthem MediBlue Plus (HMO) H4346-017
- Anthem MediBlue Plus (HMO) H4346-024
- Anthem MediBlue Dual Advantage (HMO D-SNP) H4346-025



Dignity
HCA, UMC, VHS

- Boulder City Hospital
- Mesa View Hospital
- North Vista Hospital
- UHS-Desert View

Wellcare by Allwell

- Wellcare No Premium Open (PPO) H8458-001
- Wellcare No Premium (HMO) H6446-001
- Wellcare Giveback (HMO) H6446-003
- Wellcare Assist (HMO) H6446-011
- Wellcare Specialty No Premium (HMO C-SNP) H6446-017
- Wellcare Dual Access (HMO) H6446-014
- Wellcare Patriot Giveback Open (PPO) H8458-002



HCA, UMC, VHS

- Boulder City Hospital
- Mesa View Hospital
- North Vista Hospital
- UHS-Desert View



People. Passion. Purpose.

We are **EXCITED** to introduce **P3@Home**.

Our new home care program is designed to make receiving top-quality care more accessible.



- ♥ **P3@Home** visits are not intended to replace primary care providers or comprehensive visits.
- ♥ Instead, **P3@Home** providers will work in **PARTNERSHIP** with primary care providers to give patients the **CARE** they need when they need it **MOST**.
- ♥ **P3@Home** providers are **AVAILABLE** to provide health services in the **COMFORT** and **PRIVACY** of the patients' home who are suffering from chronic conditions or experiencing difficulty attending traditional office visits.



Patients may **QUALIFY if they have any of the chronic conditions below:**

- > Chronic heart failure
- > Diabetes
- > High blood pressure
- > Cancer
- > Dementia
- > And more

If you have any **QUESTIONS** or to find out if your patients qualify, please reach out to **P3.Home@P3HP.org** or call **(725) 231-8000**.

THANK YOU.