

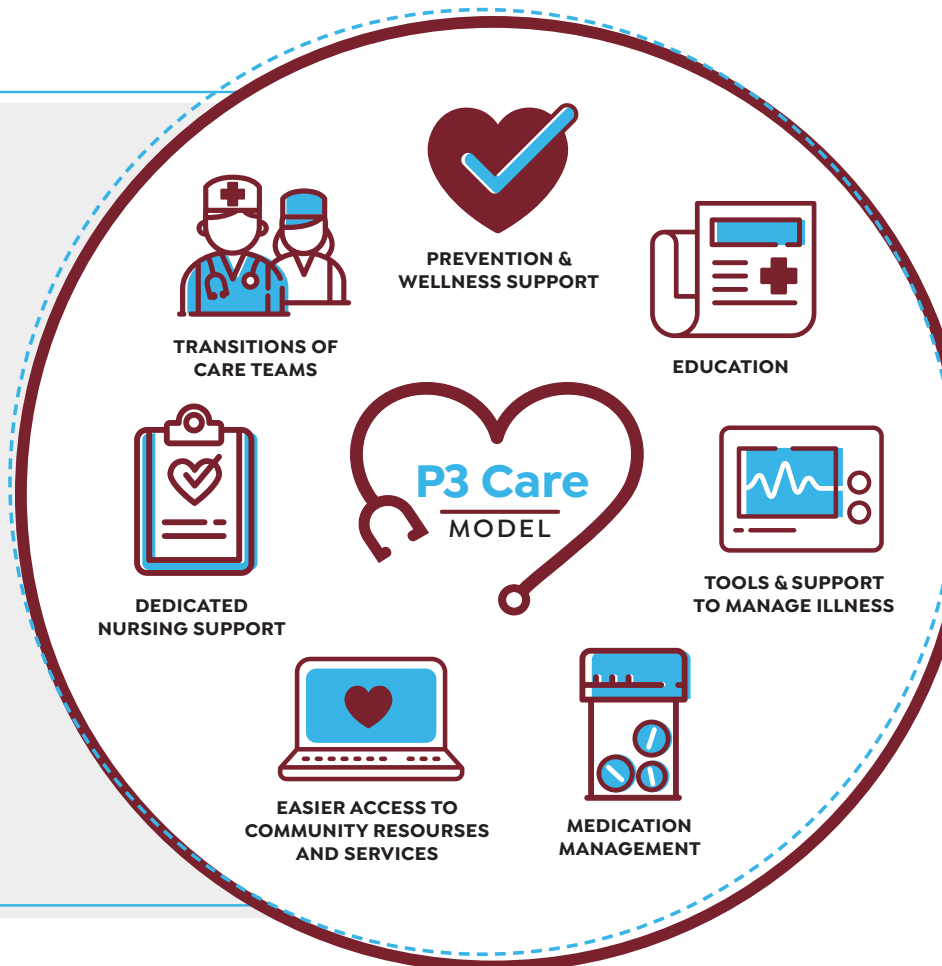
Here when your clients **NEED US MOST.**

By selecting one of our health plan partners and a primary care provider in the P3 network, your clients have access to P3's patient teams and care services.

Care management.

We know many of your client's healthcare needs happen outside their provider's office. Our team of nurses and medical assistants work closely with primary care providers to:

- ♥ IDENTIFY PATIENTS WHO MAY HAVE ACUTE NEEDS OR CHRONIC ILLNESSES.
- ♥ OUTREACH TO PATIENTS TO ENSURE THEY HAVE THE RESOURCES NEEDED TO STAY HEALTHY AND SAFE.
- ♥ PROVIDE EXTRA SUPPORT FOR COMPREHENSIVE CARE.



P3 care experience navigators.

- > SCHEDULE APPOINTMENTS
- > FIND A PROVIDER
- > SUPPORT THEM WHEN ISSUES ARISE
- > CONNECT THEM WITH CARE MANAGERS TO HELP

Ongoing outreach and patient education resources:

- > ANNUAL WELLNESS VISITS
- > PREVENTATIVE SCREENINGS AND EXAMS
- > HEALTH FAIRS AND FLU SHOT CLINICS
- > SUPPORT MANAGING YOUR CHRONIC ILLNESS

CONTACT P3 CARE TEAM AT (702) 333-4700.

P3 Health Partners
Nevada
People. Passion. Purpose.

The care your clients **DESERVE.**

Delivered by a **STRONG NETWORK** of providers and partners.



P3 Medical Group Clinics

11+

70 Affiliate Medical Groups

113 Locations Network-Wide

Affiliate Primary Care Providers **373+**

OUR 2023 HEALTH PLAN PARTNERS INCLUDE:



For a complete list of our providers scan the QR code.

P3 Health Partners
Nevada
People. Passion. Purpose.

Here is a list of our **STRONG NETWORK** of providers and partners.

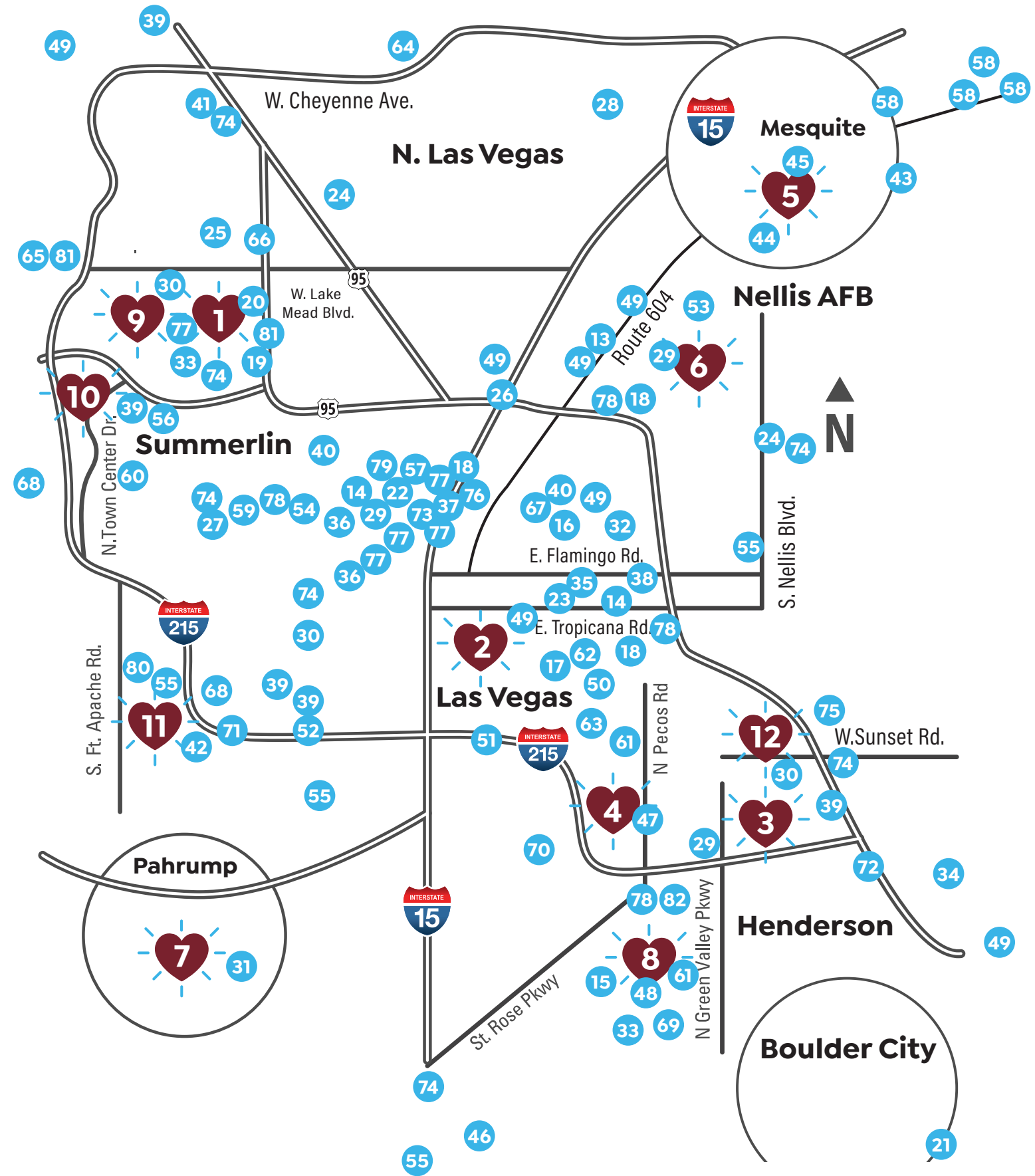
P3 MEDICAL GROUP LOCATIONS

- 1) Business Park | 5 PCPS
- 2) Desert Springs | 1 PCP
- 3) Green Valley | 3 PCPS
- 4) Henderson (Commercial) | 2 PCPS
- 5) Mesquite | 1 PCP
- 6) Nellis | **COMING SOON**
- 7) Pahrump | 3 PCPS
- 8) Seven Hills | 3 PCPS
- 9) Summerlin | 5 PCPS
- 10) Town Center | 3 PCPS
- 11) West Sunset | 4 PCPS
- 12) Whitney Ranch | 2 PCPS

AFFILIATE MEDICAL GROUP LOCATIONS

- 13) Abhinav Sinha, MD PC | 1 LOCATION | 2 PCPS
- 14) Absolute Primary Care Center | 2 LOCATIONS | 1 PCP
- 15) Advanced Urgent Care | 1 LOCATION | 5 PCPS
- 16) Alpine Healthcare | 1 LOCATION | 3 PCPS
- 17) A-P Medical Group | 1 LOCATION | 1 PCP
- 18) Apex Medical Center | 3 LOCATIONS | 5 PCPS
- 19) Ascent Primary Care | 1 LOCATION | 1 PCP
- 20) Avencia Medical Center | 1 LOCATION | 4 PCPS
- 21) Boulder City Primary Care | 1 LOCATION | 3 PCPS
- 22) Calderon Medical Group | 1 LOCATION | 3 PCPS
- 23) Prime Care Medical Services | 1 LOCATION | 1 PCP
- 24) Clinica Medica Del Pueblo | 2 LOCATIONS | 4 PCPS
- 25) Daulat Medical Center | 1 LOCATION | 1 PCP
- 26) Doyne Medical | 1 LOCATION | 2 PCPS
- 27) Durango Health Group | 1 LOCATION | 7 PCPS
- 28) Encompass Care | 1 LOCATION | 1 PCP
- 29) Family Doctors of Green Valley | 3 LOCATIONS | 8 PCPS
- 30) Forte Family Practice | 3 LOCATIONS | 11 PCPS
- 31) Goodheart Medical Group | 1 LOCATION | 2 PCPS
- 32) Good Samaritan LLC | 1 LOCATION | 1 PCP
- 33) Health4life | 2 LOCATIONS | 1 PCP
- 34) Henderson Health Group | 1 LOCATION | 7 PCPS
- 35) Humanitas Primary Care | 1 LOCATION | 2 PCPS
- 36) Humanity Health Center | 2 LOCATIONS | 6 PCPS
- 37) Internal Medicine Specialists of Las Vegas | 1 LOCATION | 4 PCPS
- 38) Jose Maria Partida Corona MD PC | 1 LOCATION | 2 PCPS
- 39) Las Vegas Medical Group | 5 LOCATIONS | 23 PCPS
- 40) Machuca Medicine | 2 LOCATIONS | 2 PCPS

- 41) Medical Care Now | 1 LOCATION | 1 PCP
- 42) Medical Excellence Clinic | 1 LOCATION | 1 PCP
- 43) Mesa View Medical Group | 1 LOCATION | 9 PCPS
- 44) Mesa View Medical Group Quick Care MOAPA | 1 LOCATION | 4 PCPS
- 45) Mesa View Quick Care Mesquite | 1 LOCATION | 3 PCPS
- 46) M Family Care | 1 LOCATION | 1 PCP
- 47) My Family Doc | 1 LOCATION | 3 PCPS
- 48) Nevada Family Care & Wellness Center | 1 LOCATION | 1 PCP
- 49) Nevada Health Centers | 7 LOCATIONS | 27 PCPS
- 50) Nippon Clinic | 1 LOCATION | 2 PCPS
- 51) Patients Choice Primary Care | 1 LOCATION | 6 PCPS
- 52) Phillips Clinic Family Practice | 1 LOCATION | 3 PCPS
- 53) Premium Family Care | 1 LOCATION | 3 PCPS
- 54) Primary Care Center of Nevada | 1 LOCATION | 2 PCPS
- 55) Procure Medical Group | 4 LOCATIONS | 8 PCPS
- 56) Queensridge Health Care | 1 LOCATION | 7 PCPS
- 57) RB Wellness Clinic | 1 LOCATION | 1 PCP
- 58) Revere Health | 4 LOCATIONS | 30 PCPS
- 59) Sahara Family & Skin Clinic | 1 LOCATION | 1 PCP
- 60) Sahara Health Group | 1 LOCATION | 7 PCPS
- 61) Sagebrush Medical Center | 2 LOCATIONS | 5 PCPS
- 62) Seema Anjum, MD | 1 LOCATION | 1 PCP
- 63) Serenity Family Practice | 1 LOCATION | 2 PCPS
- 64) Shadow Mountain Health Group | 1 LOCATION | 7 PCPS
- 65) Sheryl J Cipollini, LLC | 1 LOCATION | 1 PCP
- 66) Shilpa B Thaker MD LTD | 1 LOCATION | 1 PCP
- 67) Southern Nevada Medical & Behavioral Group | 1 LOCATION | 4 PCPS
- 68) Spring Mountain Medical | 2 LOCATIONS | 4 PCPS
- 69) Sun Medical Service Group | 1 LOCATION | 1 PCP
- 70) Sundance Medical Center | 1 LOCATION | 4 PCPS
- 71) Total Wellness Family Medicine | 1 LOCATION | 1 PCP
- 72) Touro University Nevada | 1 LOCATION | 10 PCPS
- 73) Towngate Medical Center | 1 LOCATION | 1 PCP
- 74) UMC | 11 LOCATIONS | 26 PCPS
- 75) Union Village Medical Group | 1 LOCATION | 7 PCPS
- 76) University Medical Center & Wellness Center | 1 LOCATION | 1 PCP
- 77) UNLV Medicine | 4 LOCATIONS | 45 PCPS
- 78) Valley Oaks Medical Group | 4 LOCATIONS | 13 PCPS
- 79) Victor A. DeLeon MD | 1 LOCATION | 1 PCP
- 80) Vitality Medical & Wellness Center | 1 LOCATION | 1 PCP
- 81) VMD Primary Providers Nevada Asplin PC | 3 LOCATIONS | 28 PCPS
- 82) Wikler Family Practice | 1 LOCATION | 6 PCPS



P3 MEDICAL GROUP LOCATIONS AFFILIATE MEDICAL GROUP LOCATIONS