

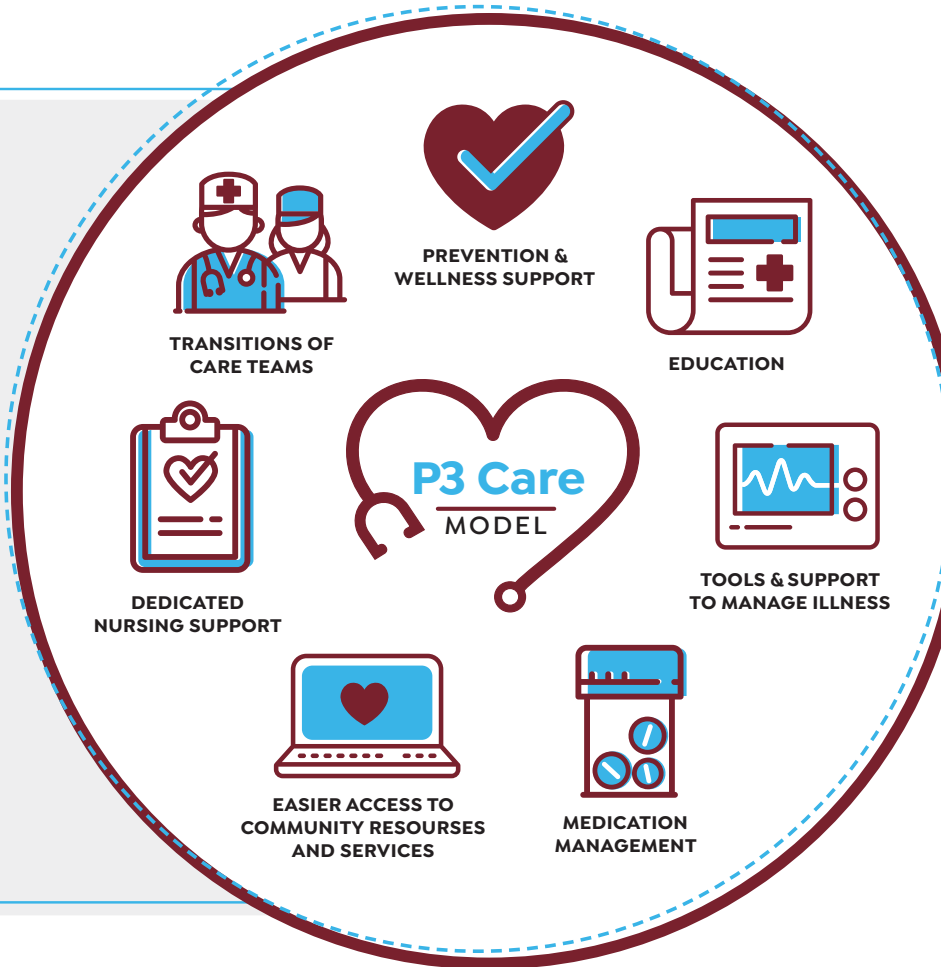
# Here when your clients **NEED US MOST.**

By selecting one of our health plan partners and a primary care provider in the P3 network, your clients have access to P3's patient teams and care services.

## Care management.

We know many of your client's healthcare needs happen outside their provider's office. Our team of nurses and medical assistants work closely with primary care providers to:

- ♥ IDENTIFY PATIENTS WHO MAY HAVE ACUTE NEEDS OR CHRONIC ILLNESSES.
- ♥ OUTREACH TO PATIENTS TO ENSURE THEY HAVE THE RESOURCES NEEDED TO STAY HEALTHY AND SAFE.
- ♥ PROVIDE EXTRA SUPPORT FOR COMPREHENSIVE CARE.



## P3 care experience navigators.

- > SCHEDULE APPOINTMENTS
- > FIND A PROVIDER
- > SUPPORT THEM WHEN ISSUES ARISE
- > CONNECT THEM WITH CARE MANAGERS TO HELP

## Ongoing outreach and patient education resources:

- > ANNUAL WELLNESS VISITS
- > PREVENTATIVE SCREENINGS AND EXAMS
- > HEALTH FAIRS AND FLU SHOT CLINICS
- > SUPPORT MANAGING YOUR CHRONIC ILLNESS

**CONTACT P3 CARE TEAM AT (702) 333-4700.**



# The care your clients **DESERVE.**

Delivered by a **STRONG NETWORK** of providers and partners.



P3 Medical Group Clinics

**12**

**60**

Affiliate Medical Groups

**100+**

Locations Network-Wide

Affiliate Primary Care Providers

**350+**

## OUR 2025 HEALTH PLAN PARTNERS INCLUDE:



For a complete list of our providers scan the QR code.



# Here is a list of our **STRONG NETWORK** of providers and partners.

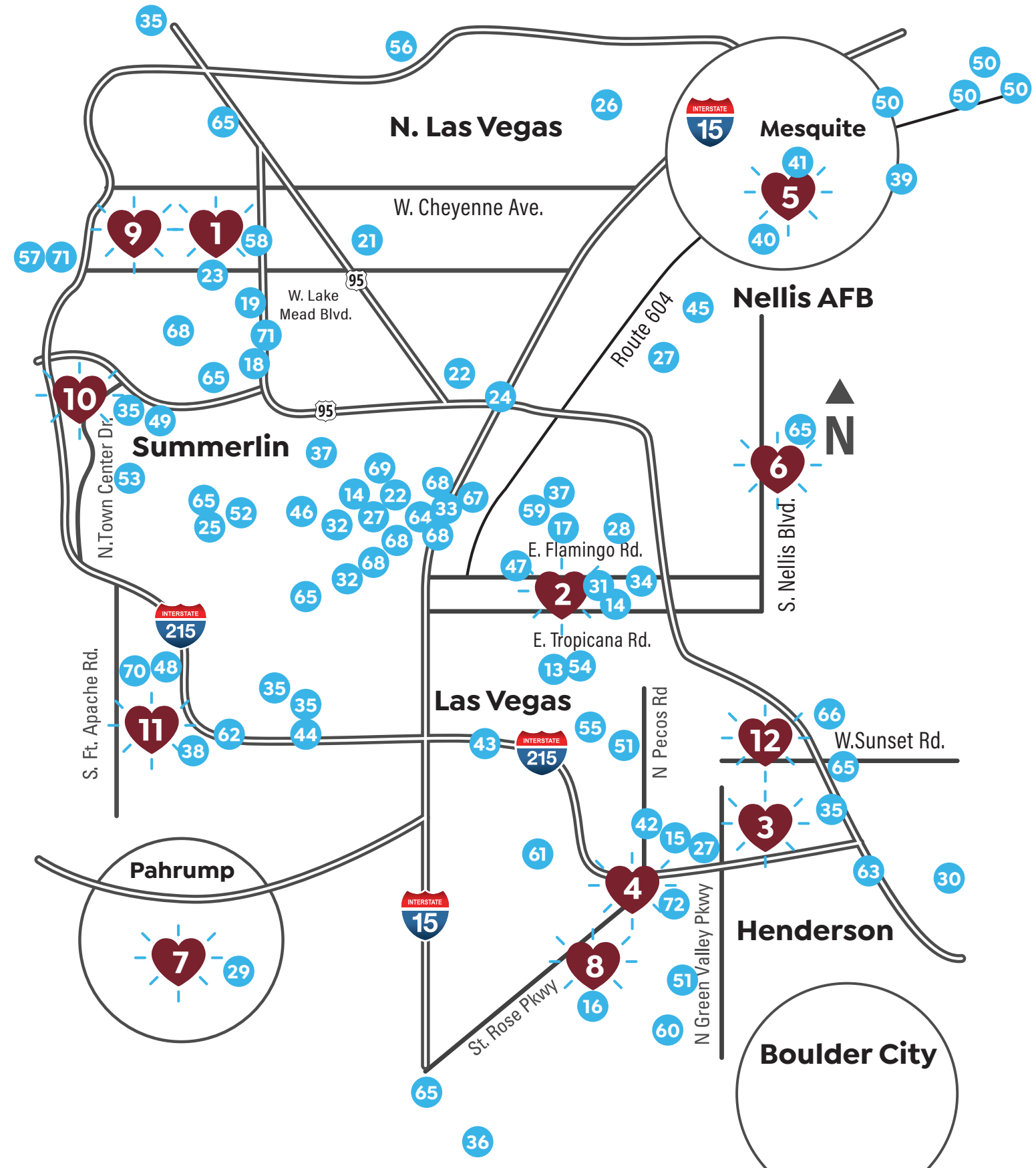
## P3 MEDICAL GROUP LOCATIONS

- 1) Business Park | 2 PCPS
- 2) Desert Springs | 1 PCP
- 3) Green Valley | 3 PCPS
- 4) Henderson (Commercial) | 1 PCP
- 5) Mesquite | 1 PCP
- 6) Nellis | 1 PCP
- 7) Pahrump | 3 PCPS
- 8) Seven Hills | 3 PCPS
- 9) Summerlin (Commercial) | 1 PCP
- 10) Town Center | 3 PCPS
- 11) West Sunset | 3 PCPS
- 12) Whitney Ranch | 1 PCP

## AFFILIATE MEDICAL GROUP LOCATIONS

- 13) A-P Medical Group | 1 LOCATION | 1 PCP
- 14) Absolute Primary Care Center | 2 LOCATIONS | 1 PCP
- 15) Ace Primary Care | 1 LOCATION | 3 PCPS
- 16) Advanced Urgent Care | 1 LOCATION | 5 PCPS
- 17) Alpine Healthcare | 1 LOCATION | 3 PCPS
- 18) Ascent Primary Care | 1 LOCATION | 1 PCP
- 19) Avencia Medical Center | 1 LOCATION | 4 PCPS
- 20) Calderon Medical Group | 1 LOCATION | 3 PCPS
- 21) Canyon West Medical | 1 LOCATION | 1 PCP
- 22) Comprehensive Medical Providers of Nevada | 1 LOCATION | 1 PCP
- 23) Daulat Medical Center | 1 LOCATION | 1 PCP
- 24) Doyne Medical | 1 LOCATION | 2 PCPS
- 25) Durango Health Group | 1 LOCATION | 7 PCPS
- 26) Encompass Care | 1 LOCATION | 1 PCP
- 27) Family Doctors of Green Valley | 3 LOCATIONS | 8 PCPS
- 28) Good Samaritan LLC | 1 LOCATION | 1 PCP
- 29) Goodheart Medical Group | 1 LOCATION | 2 PCPS
- 30) Henderson Health Group | 1 LOCATION | 7 PCPS
- 31) Humanitas Primary Care | 1 LOCATION | 2 PCPS
- 32) Humanity Health Center | 2 LOCATIONS | 6 PCPS
- 33) Internal Medicine Specialists of Las Vegas | 1 LOCATION | 4 PCPS
- 34) Jose Maria Partida Corona MD PC | 1 LOCATION | 2 PCPS

- 35) Las Vegas Medical Group | 5 LOCATIONS | 23 PCPS
- 36) M Family Care | 1 LOCATION | 1 PCP
- 37) Machuca Medicine | 2 LOCATIONS | 2 PCPS
- 38) Medical Excellence Clinic | 1 LOCATION | 1 PCP
- 39) Mesa View Medical Group | 1 LOCATION | 9 PCPS
- 40) Mesa View Medical Group Quick Care MOAPA | 1 LOCATION | 4 PCPS
- 41) Mesa View Quick Care Mesquite | 1 LOCATION | 3 PCPS
- 42) My Family Doc | 1 LOCATION | 3 PCPS
- 43) Patients Choice Primary Care | 1 LOCATION | 6 PCPS
- 44) Phillips Clinic Family Practice | 1 LOCATION | 3 PCPS
- 45) Premium Family Care | 1 LOCATION | 3 PCPS
- 46) Primary Care Center of Nevada | 1 LOCATION | 2 PCPS
- 47) Primary Care Medical Services | 1 LOCATION | 1 PCP
- 48) PRIMMED | 4 LOCATIONS | 3 PCPS
- 49) Queensridge Health Care | 1 LOCATION | 7 PCPS
- 50) Revere Health | 4 LOCATIONS | 30 PCPS
- 51) Sagebrush Medical Center | 3 LOCATIONS | 7 PCPS
- 52) Sahara Family & Skin Clinic | 1 LOCATION | 1 PCP
- 53) Sahara Health Group | 1 LOCATION | 7 PCPS
- 54) Seema Anjum, MD | 1 LOCATION | 1 PCP
- 55) Serenity Family Practice | 1 LOCATION | 2 PCPS
- 56) Shadow Mountain Health Group | 1 LOCATION | 7 PCPS
- 57) Sheryl J Cipollini, LLC | 1 LOCATION | 1 PCP
- 58) Shilpa B Thaker MD LTD | 1 LOCATION | 1 PCP
- 59) Southern Nevada Medical & Behavioral Group | 1 LOCATION | 4 PCPS
- 60) Sun Medical Service Group | 1 LOCATION | 1 PCP
- 61) Sundance Medical Center | 1 LOCATION | 4 PCPS
- 62) Total Wellness Family Medicine | 1 LOCATION | 1 PCP
- 63) Touro University Nevada | 1 LOCATION | 10 PCPS
- 64) Towngate Medical Center | 1 LOCATION | 1 PCP
- 65) UMC | 11 LOCATIONS | 26 PCPS
- 66) Union Village Medical Group | 1 LOCATION | 7 PCPS
- 67) University Medical Center | 11 LOCATIONS | 31 PCPS
- 68) UNLV Medicine | 5 LOCATIONS | 53 PCPS
- 69) Victor A. DeLeon MD | 1 LOCATION | 1 PCP
- 70) Vitality Medical & Wellness Center | 1 LOCATION | 1 PCP
- 71) VMD Primary Providers Nevada Asplin PC | 3 LOCATIONS | 28 PCPS
- 72) Wikler Family Practice | 1 LOCATION | 6 PCPS



**P3 MEDICAL GROUP LOCATIONS**



**AFFILIATE MEDICAL GROUP LOCATIONS**