

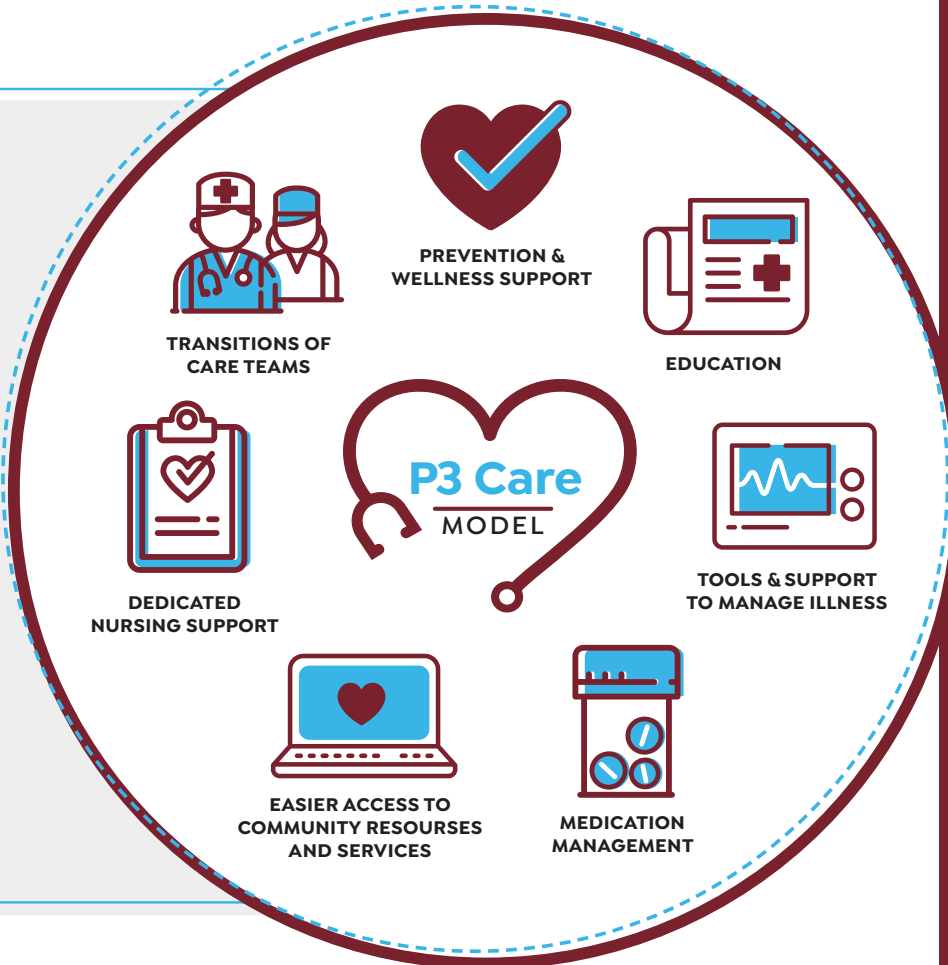
# Here when your clients **NEED US MOST.**

By selecting one of our health plan partners and a primary care provider in the P3 network, your clients have access to P3’s patient teams and care services.

## Care management.

We know many of your client’s healthcare needs happen outside their provider’s office. Our team of nurses and medical assistants work closely with primary care providers to:

- ♥ IDENTIFY PATIENTS WHO MAY HAVE ACUTE NEEDS OR CHRONIC ILLNESSES.
- ♥ OUTREACH TO PATIENTS TO ENSURE THEY HAVE THE RESOURCES NEEDED TO STAY HEALTHY AND SAFE.
- ♥ PROVIDE EXTRA SUPPORT FOR COMPREHENSIVE CARE.



## P3 care experience navigators.

- > SCHEDULE APPOINTMENTS
- > FIND A PROVIDER
- > SUPPORT THEM WHEN ISSUES ARISE
- > CONNECT THEM WITH CARE MANAGERS TO HELP

## Ongoing outreach and patient education resources:

- > ANNUAL WELLNESS VISITS
- > PREVENTATIVE SCREENINGS AND EXAMS
- > HEALTH FAIRS AND FLU SHOT CLINICS
- > SUPPORT MANAGING YOUR CHRONIC ILLNESS

**CONTACT P3 CARE TEAM AT (702) 333-4700.**

**P3** Health Partners  
**Nevada**  
People. Passion. Purpose.

# The care your clients **DESERVE.**

Delivered by a **STRONG NETWORK** of providers and partners.



**7**

P3 Medical  
Group Clinics

**40+**

Affiliate  
Medical  
Groups

**90+**

Locations  
Network-Wide

Affiliate  
Primary Care  
Providers

**250+**

## OUR 2026 HEALTH PLAN PARTNERS INCLUDE:

**aetna**<sup>SM</sup> **Humana**<sup>®</sup>

 **ALIGNMENT**  
HEALTH PLAN



For a complete list of our providers scan the QR code.

**P3** Health Partners  
**Nevada**  
People. Passion. Purpose.

# Here is a list of our **STRONG NETWORK** of providers and partners.

## P3 MEDICAL GROUP LOCATIONS

- 1) Business Park | 4 PCPS
- 2) Mesquite | 1 PCP
- 3) Nellis | 1 PCP
- 4) Pahrump | 1 PCP
- 5) Seven Hills | 5 PCPS
- 6) West Sunset | 3 PCPS
- 7) Whitney Ranch | 2 PCPS

## AFFILIATE MEDICAL GROUP LOCATIONS

- 8) Absolute Primary Care Center | 2 LOCATIONS | 1 PCP
- 9) Ace Primary Care | 1 LOCATION | 3 PCPS
- 10) Ascent Primary Care | 1 LOCATION | 1 PCP
- 11) Calderon Medical Group | 1 LOCATION | 3 PCPS
- 12) Canyon West Medical | 1 LOCATION | 1 PCP
- 13) Clay Health and Care | 2 LOCATIONS | 2 PCP
- 14) Comprehensive Medical Providers of Nevada | 1 LOCATION | 1 PCP
- 15) Daulat Medical Center | 1 LOCATION | 1 PCP
- 16) Doyne Medical | 1 LOCATION | 2 PCPS
- 17) Encompass Care | 1 LOCATION | 1 PCP
- 18) Family Doctors of Green Valley | 3 LOCATIONS | 8 PCPS
- 19) Good Samaritan LLC | 1 LOCATION | 1 PCP
- 20) Goodheart Medical Group | 1 LOCATION | 2 PCPS
- 21) Humanity Health Center | 2 LOCATIONS | 6 PCPS
- 22) Internal Medicine Specialists of Las Vegas | 1 LOCATION | 4 PCPS
- 23) Jose Maria Partida Corona MD PC | 1 LOCATION | 2 PCPS
- 24) Las Vegas Medical Group | 5 LOCATIONS | 23 PCPS

- 25) Medical Excellence Clinic | 1 LOCATION | 1 PCP
- 26) My Family Doc | 1 LOCATION | 3 PCPS
- 27) Phillips Clinic Family Practice | 1 LOCATION | 3 PCPS
- 28) Premium Family Care | 1 LOCATION | 3 PCPS
- 29) Primary Care Center of Nevada | 1 LOCATION | 2 PCPS
- 30) Primary Care Medical Services | 1 LOCATION | 1 PCP
- 31) PRIMMED | 3 LOCATIONS | 6 PCPS
- 32) Priority Health Group | 1 LOCATION | 4 PCPS
- 33) Revere Health | 4 LOCATIONS | 30 PCPS
- 34) Sagebrush Medical Center | 3 LOCATIONS | 7 PCPS
- 35) Sahara Family & Skin Clinic | 1 LOCATION | 1 PCP
- 36) Seema Anjum, MD | 1 LOCATION | 1 PCP
- 37) Shadow Mountain Health Group | 1 LOCATION | 7 PCPS
- 38) Shilpa B Thaker MD LTD | 1 LOCATION | 1 PCP
- 39) Southern Nevada Medical & Behavioral Group | 1 LOCATION | 4 PCPS
- 40) Sundance Medical Center | 1 LOCATION | 4 PCPS
- 41) Sun Medical Group | 1 LOCATION | 1 PCP
- 42) Total Wellness Family Medicine | 1 LOCATION | 1 PCP
- 43) Towngate Medical Center | 1 LOCATION | 1 PCP
- 44) UMC | 11 LOCATIONS | 27 PCPS
- 45) Victor A. DeLeon MD | 1 LOCATION | 1 PCP
- 46) Vitality Medical & Wellness Center | 1 LOCATION | 1 PCP
- 47) Wikler Family Practice | 1 LOCATION | 6 PCPS
- 48) Paradise Primary Care | 1 LOCATION | 1 PCPS

